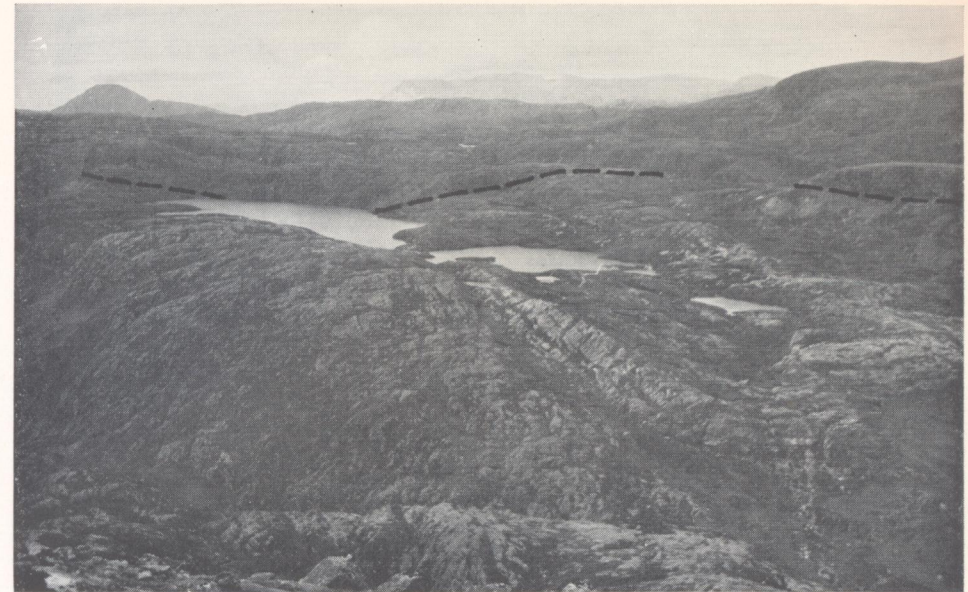


PLATE 1

*a.* The Stack of Glencoul area, viewed from the south, showing the outcrop of the Moine thrust. The stack and Loch nan Caorach are in the middle distance. Note the gentle anticlinal fold in the thrust. One of the steep reverse faults west of the Ben More thrust shows in lower right.

*b.* Specimen of primary mylonitic rock from the Stack of Glencoul, showing the characteristic intrafolial type of folding. Specimen is approximately 1 foot long. (Specimen in the Royal Scottish Museum, Edinburgh; photographed by permission of the Director.)



*a*



*b*